

ELKOHHA
see the light

WHY LEDs ARE LIGHTING SOLUTIONS FOR THE FUTURE

Over the last fifty years, the lighting industry has focused on creating solutions that make life simpler. Solutions that last, without depleting our environment with toxic wastes and gases. Ideas that aren't just convenient solutions for today, but also road-pavers for a sustainable tomorrow.

One such invention is the Light Emitting Diode (LED) - a lighting solution that was first used in 1962, and that has been making constant leaps of progress ever since. LEDs were first used as indicator lamps for electronic devices. And over the years, they have found utility in many more applications including street lamps, televisions, mobile phones and motor vehicles, among others.

LEDs have many advantages over incandescent light sources, such as lower energy consumption, longer life, higher durability, reduced heat emissions and no toxic discharges, which make it the preferred choice of lighting for most.

After all, we're living in an age where the world is struggling for sustenance. And LEDs come with the promise of a bright future.

BENEFITS OF LED

- Low energy consumption
- Long life span
- Highly durable
- Compact size
- No fade time
- High on safety
- Environment-friendly
- Zero UV emissions
- Operates in extreme temperatures
- Efficient light dispersion



NO UV



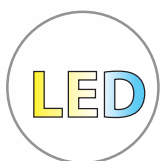
NO IR



NO MERCURY



ECO-FRIENDLY



LED

ABOUT ELKOHA

A new world needs new solutions. And only innovators can come up with new solutions to the world's problems. Innovation drives everything we do. We are Elkoha, an LED light company with Japanese genetic pedigree.

We take pride in manufacturing the most technologically advanced lighting products. Our products are designed by embracing the latest in LED technology. Born in 2007 out of a marriage between Elcomponics Group, India and Tamura Corporation, Japan, we have quickly grown to command the space of creating innovative lighting solutions. From industries to streets, home and offices and airports and sporting arenas, we have lighting solutions for almost every sphere of our daily life.

Elcomponics Group, India has been around for more than a quarter of a century and is respected as a leader in manufacturing components and subassemblies. It has an illustrious list of clients, studded with leading

MNCs and business houses from across the world. The group boasts of global recognitions by leading certification bodies, owing to our advanced design and engineering capabilities. It is an ISO, CE and UL certified corporation.

Tamura, Japan is a world leader in the business of electronic components and transformers, with manufacturing facilities around the globe. Elkoha is made of two words – 'El' of Elcomponics and 'Koha', a subsidiary of Tamura that is engaged in the designing and manufacturing of its LED lights.

With the global wisdom and technological edge made available to us by the Elcomponics group, ELKOHA is poised to lead the LED revolution that will change the future of lighting in the subcontinent.

CONTENTS

Introducing the ROCK Series	01
Outdoor Lights	03
Street Lighting, Rock Series	05
Street Lighting, Standard Series	07
Street Lighting, Concord Series	08
Street Lighting, Integrated Solar Light	09
Flood Lighting, Rock Series	11
Industrial Lights	13
Bay Lighting, High Bay Lights, Rock Series	15
Bay Lighting, Low Bay Lights, Rock Series	17
Bay Lighting, High Bay Lights, Standard Series	19
Elements Proof Light	21
Indoor Lights	23
Bulb, Standard Series	25
Bulb, Classic Series	26
Tubelight	27
State-of-the-art Mood Lighting	29
Panel Light, Superior Series	31
Panel Light, Standard Series	35
Down Light Classic Series	37
Home Décor Lights Classic series	39
Glossary	41



Introducing The ROCK Series for outdoor and industrial applications

Following our philosophy of 'SWITCH TO HIGHER LUMEN SHED MORE WATT', the ROCK Series shatters the lumen per watt barrier.

Lights delivering system lumen efficacy of >120 lumen/watt, arguably, the best in class as on date. The series absorbs years of experience and market understanding to deliver products engineered for perfection.

Street lights and high bay (flood) lights employ high efficiency LED COB Package from CITIZEN, Japan and specialized secondary optics using optics grade glass lens (minimizing light loss) to deliver best lighting output. The glass lenses are weather proof and chemical resistant which ensures safety of the light source (COB Package) and no yellowing due to UV exposure.

Low bay (canopy) lights on the other hand use UV resistant, non-breakable poly carbonate cover for an anti-glare effect. It draws the advantage of best in class LED chips to bring to you light solutions most suited for under canopy lighting, low height applications, toll plazas, etc.

ROCK Series lights are designed to have modular configuration. Each module has a degree of freedom, by way of swivel which gives a flexibility to change its angle, increase the spread and optimize the light distribution as per specific lighting needs.

Keeping Indian conditions in mind, the surge protection available is 4KV for normal areas and 15KV for lightning prone areas.

These lights are highly durable and can sustain the vagaries of nature for outdoor and industrial application, while maintaining a certain aesthetic appeal for the discerning.

This surely will change the way we know our lighting products.

Welcome to the ROCK Series.

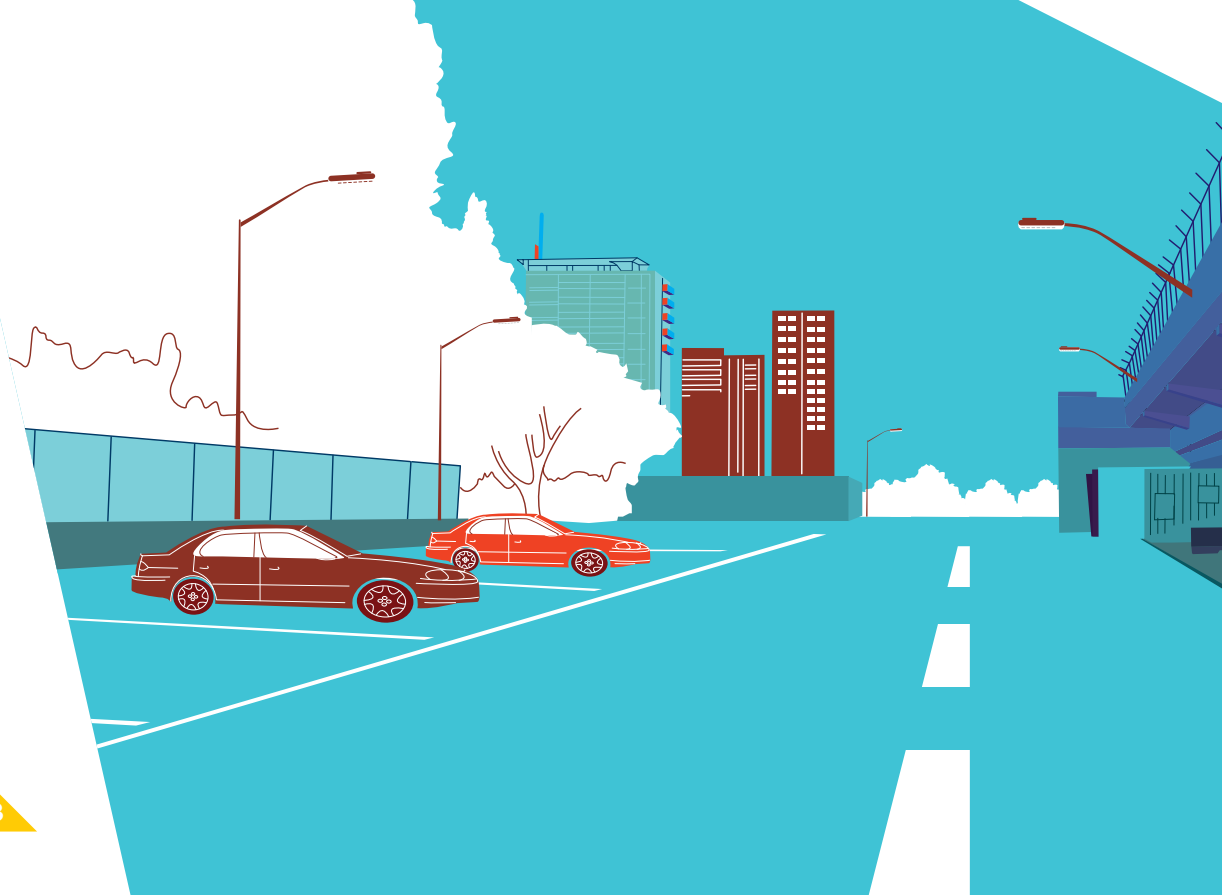


45° Angle on either side



OUTDOOR

Elkoha's range of outdoor lights is an energy-efficient solution for all your lighting requirements. Be it your building premises, street lights, parking lots or parks, our LEDs are sure to light up every dark space you can find. These powerful lights are durable, easy to maintain and are known to eliminate any and all forms of glare.



Street Lighting

Rock Series



Street Lighting

Standard Series



Street Lighting

Concord Series



Street Lighting

Integrated Solar Light

Flood Lighting

Rock Series





ROCK SERIES

Product Features

- Glare free, High uniformity
- Beam angle available: 120° (Type 2)
- Highly reliable surge protection
- High lumen delivery (Up to 120 lumen/watt)
- Long life, i.e > 50000 Hrs
- Ingress Protection: IP65

Applications:

- Highway
- Service lane
- Parking lots

Ultra High Efficiency (> 120 lumen/watt)

Product Name	Article No.	Wattage(W)	Operating Voltage Range(V)	Power Factor	CRI	CCT(K)	Lumen(lm)	IP	Life(Hrs)
LED Street Light 40W	RSL-040UH DW	40	100-240	>0.9	>70	5000	4800	IP65	50,000
LED Street Light 80W	RSL-080UH DW	80					9600		
LED Street Light 120W	RSL-120UH DW	120					14400		
LED Street Light 160W	RSL-160UH DW	160					19200		
LED Street Light 200W	RSL-200UH DW	200					24000		

High Efficiency (> 110 lumen/watt)

Product Name	Article No.	Wattage(W)	Operating Voltage Range(V)	Power Factor	CRI	CCT(K)	Lumen(lm)	IP	Life(Hrs)
LED Street Light 60W	RSL-060UH DW	60	100-240	>0.9	>70	5000	6600	IP65	50,000
LED Street Light 120W	RSL-120UH DW	120					13200		
LED Street Light 160W	RSL-180UH DW	160					19800		
LED Street Light 240W	RSL-240UH DW	240					26400		

Standard Efficiency (> 100 lumen/watt)

Product Name	Article No.	Wattage(W)	Operating Voltage Range(V)	Power Factor	CRI	CCT(K)	Lumen(lm)	IP	Life(Hrs)
LED Street Light 80W	RSL-80S DW	80	100-240	>0.9	>70	5000	8000	IP65	50,000
LED Street Light 160W	RSL-160S DW	160					16000		
LED Street Light 240W	RSL-240S DW	240					24000		

45° Angle on either side



Each module has a degree of freedom, by way of swivel which gives a flexibility to change its angle, increase the spread and optimize the light distribution as per specific lighting needs.



**STANDARD
SERIES**



**CONCORD
SERIES**



Product Features

- High power cree LEDs • Highly reliable surge protection • Glare free, High uniformity
- High lumen delivery (Up to 90 lumen/watt) • Light distribution: IESNA Type 2, Type 3 & Type 5
- Pressure die cast aluminium • Ingress Protection: IP65
- Option: Photo light sensor for dusk to dawn operation

Product Name	Article No.	Wattage(W)	Operating Voltage Range(V)	Power Factor	CRI	CCT(K)	Lumen(lm)	IP	Life(Hrs)
40W CW	STSL40-CCWSD	40	110-277	>0.95	>70	6500	3600	IP65	50,000
40W WW	STSL40-CWWSD					2700	3200		
60W CW	STSL60-CCWSD	60				6500	5400		
60W WW	STSL60-CWWSD					2700	4900		
80W CW	STSL80-CCWSD	80				6500	7200		
80W WW	STSL80-CWWSD					2700	6500		
100W CW	STSL100-CCWSD	100				6500	9000		
100W WW	STSL100-CWWSD					2700	7650		
120W CW	STSL120-CCWSD	120				6500	1100		
120W WW	STSL120-CWWSD					2700	9588		
160W CW	STSL160-CCWSD	160				6500	14000		
160W WW	STSL160-CWWSD					2700	12240		
250W CW	STSL250-CCWSD	250		>0.9		6500	21500		

Applications:

- Expressway • Secondary roads in cities & towns • Periphery/Campus lighting

Product Features

- High power COB package is light source • Glare free, High uniformity
- Light distribution: IESNA Type 2 • Pressure die cast aluminium
- Ingress Protection: IP65

Product Name	Article No.	Wattage(W)	Operating Voltage Range(V)	Power Factor	CRI	CCT(K)	Lumen(lm)	IP	Life(Hrs)
10W COB Streetlight	CCDSL-010W COBCW	10	110-277	>0.9	>70	6500	900	IP65	50,000
20W COB Streetlight	CCDSL-020W COBCW	20				6500	1725		
30W COB Streetlight	CCDSL-030W COBCW	30				6500	2475		
40W COB Streetlight	CCDSL-040W COBCW	40				6500	3375		
50W COB Streetlight	CCDSL-050W COBCW	50				6500	4125		
60W COB Streetlight	CCDSL-060W COBCW	60				6500	4875		
70W COB Streetlight	CCDSL-070W COBCW	70				6500	5700		

Applications:

- Expressway
- Secondary roads in cities & towns
- Periphery/Campus lighting
- Residential township's interior road, park & pathway



INTEGRATED SOLAR LIGHT

ELKOHA ISSL is different from the conventional solar street light systems owing to its all-in-one design. A conventional solar street light system deploys solar panels, luminaire and a battery connected together by wires and cables and mounted on a pole. Each component of the system is separate and is externally connected to each other - unlike the ELKOHA ISSL which uses its unique design to integrate all the components into one single fixture making it easy to install and maintain.

Product Features

- Elegant integrated design, Aluminum alloy case
- Easy to install and auto on/off
- Smart energy saving lighting mode

ISSL - 12

- First 3 Hrs at 100%
- Rest of the night at 30% till dawn with motion sensor
- Illumination goes up to 100% on detecting movement
- Back at 30% after 30 seconds
- Dimension (L x W x H) mm:
783 x 227 x 164

ISSL - 20/30

- First 5 Hrs at 100%
- Rest of the night at 30% till dawn
- Dimension (L x W x H) mm:
1091 x 488 x 117

Product Name	Article No.	Polycrystalline Silicone Solar Panel	Battery/Storage Capacity (Li-ion)	LED Lumen (typical)	CCT	IP	Installation Height (Mtrs)
Integrated Solar Lights 12W	ISSL	15W	97.68WH	800 Lumens	6000K	IP65	3-4
Integrated Solar Lights 20W	ISSL	35W	293WH	2000 Lumens			4-5
Integrated Solar Lights 30W	ISSL	47W	390WH	3000 Lumens			5-6

Applications:

- Garden lighting • Peripheral lighting • Campus/Yard lighting
- Medium/Low traffic roads, Low/Medium mast lighting





ROCK SERIES

Product Features

- Robust design for long life
- High lumen delivery (Up to 120 lumen/watt)
- Glare free, High uniformity, Highly reliable
- Specialized square optical lens for square pattern
- Surge protection 4KV/15KV
- Long life, i.e > 50000 Hrs
- Ingress Protection: IP65



Each module has a degree of freedom, by way of swivel which gives a flexibility to change its angle to increase the spread and optimize the light distribution as per specific lighting need.

Ultra High Efficiency (> 120 lumen/watt)

Product Name	Article No.	Wattage(W)	Operating Voltage Range(V)	Power Factor	CRI	CCT(K)	Lumen(lm)	IP	Life(Hrs)
LED Flood Light 40W	RHBL-040UH DW	40	100-240	>0.9	>70	5000	4800	IP65	50,000
LED Flood Light 80W	RHBL-080UH DW	80					9600		
LED Flood Light 120W	RHBL-120UH DW	120					14400		
LED Flood Light 160W	RHBL-160UH DW	160					19200		
LED Flood Light 200W	RHBL-200UH DW	200					24000		

High Efficiency (> 110 lumen/watt)

Product Name	Article No.	Wattage(W)	Operating Voltage Range(V)	Power Factor	CRI	CCT(K)	Lumen(lm)	IP	Life(Hrs)
LED Flood Light 60W	RHBL-060H DW	60	100-240	>0.9	>70	5000	6600	IP65	50,000
LED Flood Light 120W	RHBL-120H DW	120					13200		
LED Flood Light 180W	RHBL-180H DW	180					19800		
LED Flood Light 240W	RHBL-240H DW	240					26400		

Standard Efficiency (> 100 lumen/watt)

Product Name	Article No.	Wattage(W)	Operating Voltage Range(V)	Power Factor	CRI	CCT(K)	Lumen(lm)	IP	Life(Hrs)
LED Flood Light 80W	RHBL-80S DW	80	100-240	>0.9	>70	5000	8000	IP65	50,000
LED Flood Light 160W	RHBL-160S DW	160					16000		
LED Flood Light 240W	RHBL-240S DW	240					24000		

LED Linear Flood Light

Ultra High Efficiency (> 120 lumen/watt)

Product Name	Article No.	Wattage(W)	Operating Voltage Range(V)	Power Factor	CRI	CCT(K)	Lumen(lm)	IP	Life(Hrs)
LED Linear Flood Light 40W	RLHBL-040UH DW	40	100-240	>0.9	>70	5000	4800	IP65	50,000
LED Linear Flood Light 80W	RLHBL-080UH DW	80					9600		
LED Linear Flood Light 120W	RLHBL-120UH DW	120					14400		

High Efficiency (> 110 lumen/watt)

Product Name	Article No.	Wattage(W)	Operating Voltage Range(V)	Power Factor	CRI	CCT(K)	Lumen(lm)	IP	Life(Hrs)
LED Linear Flood Light 60W	RLHBL-060H DW	60	100-240	>0.9	>70	5000	6600	IP65	50,000
LED Linear Flood Light 120W	RLHBL-120H DW	120					13200		
LED Linear Flood Light 180W	RLHBL-180H DW	180					19800		

Standard Efficiency (> 100 lumen/watt)

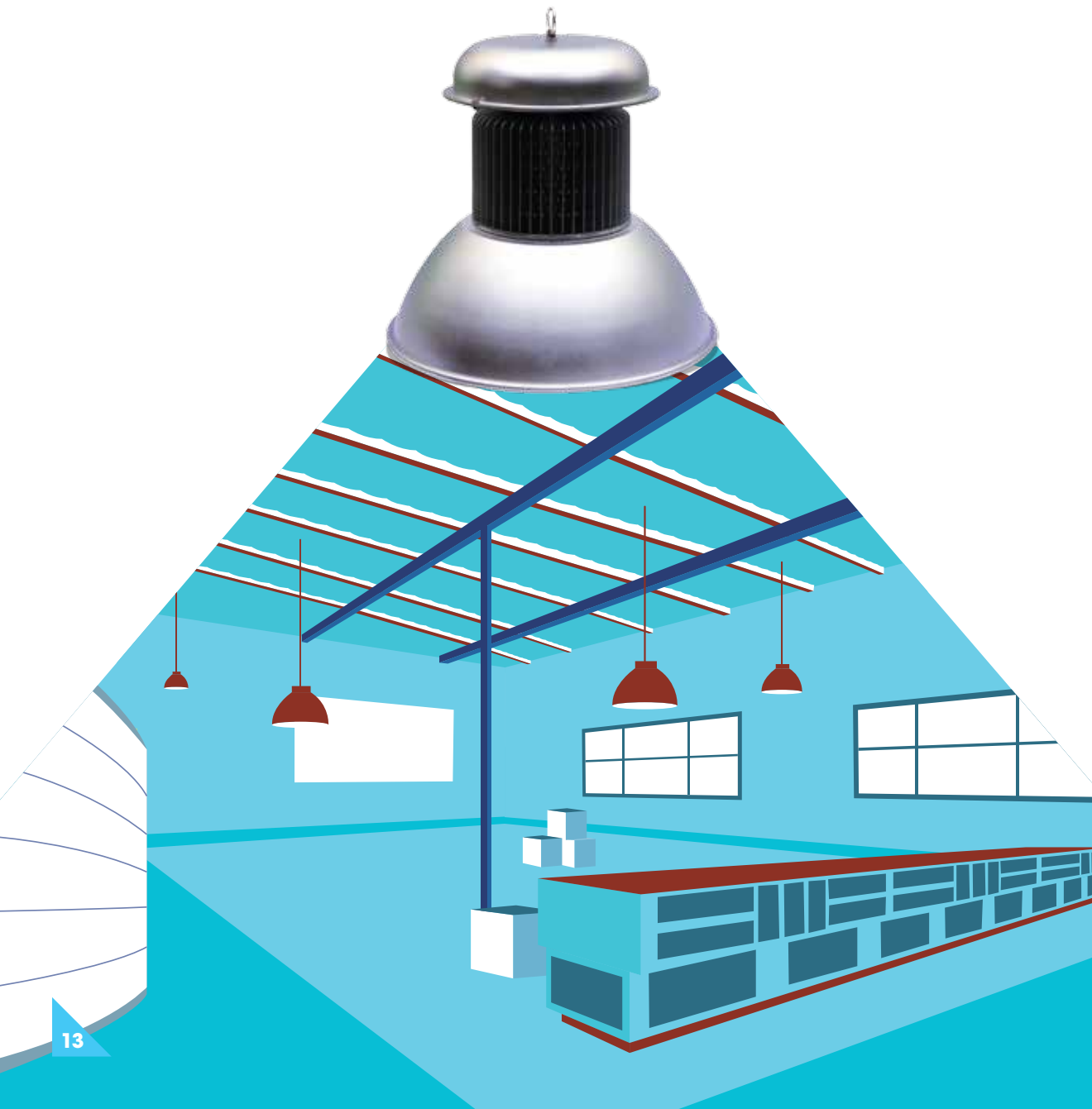
Product Name	Article No.	Wattage(W)	Operating Voltage Range(V)	Power Factor	CRI	CCT(K)	Lumen(lm)	IP	Life(Hrs)
LED Linear Flood Light 80W	RLHBL-80S DW	80	100-240	>0.9	>70	5000	8000	IP65	50,000
LED Linear Flood Light 160W	RLHBL-160S DW	160					16000		

Applications:

- Warehouse & high ceiling installation • Production floor
- Indoor & outdoor industrial application

INDUSTRIAL

Our range of industry-grade LED lighting has been designed to function in extreme conditions. From factories and assembly lines to warehouses and airports, our range of highly durable lights consistently delivers great performance while saving on power consumption.



Bay Lighting

High Bay Lights Rock Series



Bay Lighting

Low Bay Lights Rock Series

Bay Lighting

High Bay Lights Standard Series



Elements Proof Light



Product Features

- Glare free, High uniformity
- Beam angle available: 90° (Type 2)
- High reliability surge protection
- High lumen delivery (Up to 120 lumen/watt)
- Long life, i.e > 50000 Hrs
- Ingress Protection: IP65



Each module has a degree of freedom, by way of swivel which gives a flexibility to change its angle to increase the spread and optimize the light distribution as per specific lighting need.

Ultra High Efficiency (> 120 lumen/watt)

Product Name	Article No.	Wattage(W)	Operating Voltage Range(V)	Power Factor	CRI	CCT(K)	Lumen(lm)	IP	Life(Hrs)
LED High Bay Light 40W	RHBL-040UH DW	40	100-240	>0.9	>70	5000	4800	IP65	50,000
LED High Bay Light 80W	RHBL-080UH DW	80					9600		
LED High Bay Light 120W	RHBL-120UH DW	120					14400		
LED High Bay Light 160W	RHBL-160UH DW	160					19200		
LED High Bay Light 200W	RHBL-200UH DW	200					24000		

High Efficiency (> 110 lumen/watt)

Product Name	Article No.	Wattage(W)	Operating Voltage Range(V)	Power Factor	CRI	CCT(K)	Lumen(lm)	IP	Life(Hrs)
LED High Bay Light 60W	RHBL-060H DW	60	100-240	>0.9	>70	5000	6600	IP65	50,000
LED High Bay Light 120W	RHBL-120H DW	120					13200		
LED High Bay Light 180W	RHBL-180H DW	180					19800		
LED High Bay Light 240W	RHBL-240H DW	240					26400		

Standard Efficiency (> 100 lumen/watt)

Product Name	Article No.	Wattage(W)	Operating Voltage Range(V)	Power Factor	CRI	CCT(K)	Lumen(lm)	IP	Life(Hrs)
LED High Bay Light 80W	RHBL-80S DW	80	100-240	>0.9	>70	5000	8000	IP65	50,000
LED High Bay Light 160W	RHBL-160S DW	160					16000		
LED High Bay Light 240W	RHBL-240S DW	240					24000		

LED Linear High Bay Light

Ultra High Efficiency (> 120 lumen/watt)

Product Name	Article No.	Wattage(W)	Operating Voltage Range(V)	Power Factor	CRI	CCT(K)	Lumen(lm)	IP	Life(Hrs)
LED Linear High Bay Light 40W	RLHBL-040UH DW	40	100-240	>0.9	>70	5000	4800	IP65	50,000
LED Linear High Bay Light 80W	RLHBL-080UH DW	80					9600		
LED Linear High Bay Light 120W	RLHBL-120UH DW	120					14400		

High Efficiency (> 110 lumen/watt)

Product Name	Article No.	Wattage(W)	Operating Voltage Range(V)	Power Factor	CRI	CCT(K)	Lumen(lm)	IP	Life(Hrs)
LED Linear High Bay Light 60W	RLHBL-060H DW	60	100-240	>0.9	>70	5000	6600	IP65	50,000
LED Linear High Bay Light 120W	RLHBL-120H DW	120					13200		
LED Linear High Bay Light 180W	RLHBL-180H DW	180					19800		

Standard Efficiency (> 100 lumen/watt)

Product Name	Article No.	Wattage(W)	Operating Voltage Range(V)	Power Factor	CRI	CCT(K)	Lumen(lm)	IP	Life(Hrs)
LED Linear High Bay Light 80W	RLHBL-80S DW	80	100-240	>0.9	>70	5000	8000	IP65	50,000
LED Linear High Bay Light 160W	RLHBL-160S DW	160					16000		

Applications:

- Warehouse & high ceiling installation • Indoor/Outdoor sports facilities
- Factory, workshop & yard • Airport high ceiling



LOW BAY LIGHTS ROCK SERIES



Linear

Product Features

- Robust design for long life
- Glare free, High uniformity
- Highly reliable
- High lumen delivery (Up to 105 lumen/watt)
- Surge protection 4KV/15KV
- Long life, i.e > 50000 Hrs
- Ingress Protection: IP65

45° Angle
on either side



Each module has a degree of freedom, by way of swivel which gives a flexibility to change its angle to increase the spread and optimize the light distribution as per specific lighting need.

Ultra High Efficiency (> 105 lumen/watt)

Product Name	Article No.	Wattage(W)	Operating Voltage Range(V)	Power Factor	CRI	CCT(K)	Lumen(lm)	IP	Life(Hrs)
LED Low Bay Light 40W	RLBL-040UH DW	40	100-240	>0.9	>70	5000	4200	IP65	50,000
LED Low Bay Light 80W	RLBL-080UH DW	80					8400		
LED Low Bay Light 120W	RLBL-120UH DW	120					12600		
LED Low Bay Light 160W	RLBL-160UH DW	160					16800		
LED Low Bay Light 200W	RLBL-200UH DW	200					21000		

High Efficiency (> 95 lumen/watt)

Product Name	Article No.	Wattage(W)	Operating Voltage Range(V)	Power Factor	CRI	CCT(K)	Lumen(lm)	IP	Life(Hrs)
LED Low Bay Light 60W	RLBL-060H DW	60	100-240	>0.9	>70	5000	5700	IP65	50,000
LED Low Bay Light 120W	RLBL-120H DW	120					11400		
LED Low Bay Light 180W	RLBL-180H DW	180					17100		
LED Low Bay Light 240W	RLBL-240H DW	240					22800		

Standard Efficiency (> 85 lumen/watt)

Product Name	Article No.	Wattage(W)	Operating Voltage Range(V)	Power Factor	CRI	CCT(K)	Lumen(lm)	IP	Life(Hrs)
LED Low Bay Light 80W	RLBL-80S DW	80	100-240	>0.9	>70	5000	6800	IP65	50,000
LED Low Bay Light 160W	RLBL-160S DW	160					13600		
LED Low Bay Light 240W	RLBL-240S DW	240					20400		

LED Linear Low Bay Light

Ultra High Efficiency (> 105 lumen/watt)

Product Name	Article No.	Wattage(W)	Operating Voltage Range(V)	Power Factor	CRI	CCT(K)	Lumen(lm)	IP	Life(Hrs)
LED Low Bay Light 40W	RLLBL-040UH DW	40	100-240	>0.9	>70	5000	4200	IP65	50,000
LED Low Bay Light 80W	RLLBL-080UH DW	80					8400		
LED Low Bay Light 120W	RLLBL-120UH DW	120					12600		

High Efficiency (> 95 lumen/watt)

Product Name	Article No.	Wattage(W)	Operating Voltage Range(V)	Power Factor	CRI	CCT(K)	Lumen(lm)	IP	Life(Hrs)
LED Low Bay Light 60W	RLLBL-060H DW	60	100-240	>0.9	>70	5000	5700	IP65	50,000
LED Low Bay Light 120W	RLLBL-120H DW	120					11400		
LED Low Bay Light 180W	RLLBL-180H DW	180					17100		

Standard Efficiency (> 85 lumen/watt)

Product Name	Article No.	Wattage(W)	Operating Voltage Range(V)	Power Factor	CRI	CCT(K)	Lumen(lm)	IP	Life(Hrs)
LED Low Bay Light 80W	RLLBL-80S DW	80	100-240	>0.9	>70	5000	6800	IP65	50,000
LED Low Bay Light 160W	RLLBL-160S DW	160					13600		

Applications:

- Industrial uses (indoor/outdoor)
- Warehouse & low height ceiling • Indoor sports stadium
- Factory, workshop & yard • Airport low ceiling



HIGH BAY LIGHTS STANDARD SERIES

Product Features

- High power efficiency > 88% (typical)
- High uniformity
- Indoor use only
- Light distribution: 30°, 60° or 120°
- Aluminium dome shape design
- Option: glass cover (specially for food & pharmaceutical factories)

Product Name	Article No.	Wattage (W)	Operating Voltage Range(V)	Power Factor	CRI	CCT(K)	Lumen(lm)	IP	Life(Hrs)
100W High Bay Light	HBL 100 CW	100	100-277	>0.95	>70	5700	7506	IP20	30,000
210W High Bay Light	HBL 210 CW	210					15000		

Applications:

- Warehouse & high ceiling installation
- Indoor sports stadium
- Factory, workshop & yard
- Airport high ceiling



ELEMENTS PROOF LIGHT



Product Name	Article No.	Wattage(W)	Operating Voltage Range(V)	Power Factor	CRI	CCT(K)	Lumen(lm)	IP	Life(Hrs)
Elements proof LED Light 20W CW (2Feet)	EPLL-020/02CW	20	100-277	>0.9	>70	6000	1900	IP65	50,000
Elements proof LED Light 20W WW (2Feet)	EPLL-020/02WW					3000	1785		
Elements proof LED Light 30W CW (3Feet)	EPLL-030/03 CW	30				6000	2850		
Elements proof LED Light 30W WW (3Feet)	EPLL-030/03 WW					3000	2675		
Elements proof LED Light 40W CW (4Feet)	EPLL-040/04 CW	40				6000	3800		
Elements proof LED Light 40W WW (4Feet)	EPLL-040/04 WW					3000	3570		
Elements proof LED Light 50W CW (5Feet)	EPLL-050/05 CW	50				6000	4750		
Elements proof LED Light 50W WW (5Feet)	EPLL-050/05 WW					3000	4465		
Elements proof LED Light 65W CW (5Feet)	EPLL-065/05 CW	65				6000	6175		
Elements proof LED Light 65W WW (5Feet)	EPLL-065/05 WW					3000	5805		

Product Features

- Waterproof, Dust-proof, Corrosion-proof, Shatter-proof
- Glare free, High uniformity
- Highly reliable
- Isolated Class 2 LED Driver with efficiency >87%
- THD: < 9%
- Ingress Protection: IP65
- Option: Diffused/Clear
- Mounting options: ceiling & hanging

Applications:

- Cold storage
- Parking lot
- Outdoor application
- Specially for food & pharmaceutical factory





INDOOR

Our range of LED Lights is the perfect solution for all your residential and commercial lighting needs. Carefully designed to provide the highest possible output, our LEDs will light up spaces that are beyond the reach of ordinary lights. With a wide range of powerful lights to choose from, you can be sure that no part of your home or office space will ever be gloomy again.

Bulb

- Standard Series • Classic Series



Tubelight

- Classic Series

Panel Light

- Superior Series • Standard Series



Down Light

- Classic Series

Home Decor Lights

- Classic Series





**STANDARD
SERIES**



**CLASSIC
SERIES**



Product Features

- Glare free, High uniformity • Highly reliable
- Irradiation Angle: 135° • Long life: 25,000 Hrs
- Ingress Protection: IP20 • Available Base: B22/E27

Product Name	Article No.	Wattage(W)	Operating Voltage Range(V)	Power Factor	CRI	CCT(K)	Lumen(lm)	IP	Life(Hrs)
5W LED bulb	BS-05B22CW	5	100-277	>0.78	>70	6500	400	IP20	25,000
	BS-05B22WW					2700	360		
	BS-05E27CW					6500	400		
	BS-05E27WW					2700	360		
8.5W LED bulb	BS-08B22CW	8.5	100-277	>0.85	>70	6500	650	IP20	25,000
	BS-08B22WW					2700	580		
	BS-08E27CW					6500	650		
	BS-08E27WW					2700	580		
10W LED bulb	BS-10B22CW	10	100-277	>0.85	>70	6500	800	IP20	25,000
	BS-10B22WW					2700	720		
	BS-10E27CW					6500	800		
	BS-10E27WW					2700	720		

Applications

- Suitable replacement for incandescent bulbs & CFLs
- Suspended luminaires, table lamps & pedestal lamps
- Residential & office lighting

Product Features

- Glare free, High uniformity • Highly reliable
- Wide irradiation angle: 270° • Long life: 25,000 Hrs
- Ingress Protection: IP20 • Available Base: B22/E27

Product Name	Article No.	Wattage(W)	Operating Voltage Range(V)	Power Factor	CRI	CCT(K)	Lumen(lm)	IP	Life(Hrs)
8W LED bulb	BO-08B22DW	8	100-240	>0.9	>70	5000	620	IP20	25,000
	BO-08B22WW				>80	3000	500		
	BO-08E27DW				>70	5000	620		
	BO-08E27WW				>80	3000	500		
10W LED bulb	BO-10B22DW	10	100-240	>0.9	>70	5000	800	IP20	25,000
	BO-10E27WW				>80	3000	640		
	BO-10E27DW				>70	5000	800		
	BO-10B22WW				>80	3000	640		
12W LED bulb	BO-12B22DW	12	100-240	>0.9	>70	5000	1000	IP20	25,000
	BO-12E27WW				>80	3000	900		
	BO-12B22DW				>70	5000	1000		
	BO-12E27WW				>80	3000	900		
16W LED bulb	BO-16E27DW	16	100-240	>0.95	>70	5000	1400	IP20	25,000
	BO-16E27WW				>80	3000	1200		

Applications:

- Suitable replacement for incandescent bulbs & CFLs
- Suspended luminaires, table lamps & pedestal lamps
- Residential & office lighting

CLASSIC SERIES



Product Features

- Glare free, High uniformity • Highly reliable
- High lumen delivery (Up to 100 lumen/watt) • Long life: 25,000 Hrs
- Ingress Protection: IP20 • Available in T8 & T10 • G13 socket
- Full plastic diffuser
- Available with inbuilt and external driver

Internal Driver

Product Name	Article No.	Wattage(W)	Operating Voltage Range(V)	Power Factor	CRI	CCT(K)	Lumen(lm)	IP	Life(Hrs)
2 feet 9W CW Tubelight	FLTL09/02CWG13ID	9	100-240	>0.9	>80	6500	850	IP20	25,000
2 feet 9W WW Tubelight	FLTL09/02WWG13ID					3000	750		
4 feet 18W CW Tubelight	FLTL18/04CWG13ID	18	100-240	>0.85	>80	6500	1700	IP20	25,000
4 feet 18W WW Tubelight	FLTL18/04WWG13ID					3200	1500		

External Driver

Product Name	Article No.	Wattage(W)	Operating Voltage Range(V)	Power Factor	CRI	CCT(K)	Lumen(lm)	IP	Life(Hrs)
4 feet 21W CW Tubelight	FLTL21/04CWG13ED	21	100-277	>0.9	>80	5000	2000	IP20	25,000
4 feet 22W CW Tubelight	FLTL22/04CWG13ED	22		>0.95	>70		1804		
4 feet 28W CW Tubelight	FLTL28/04CWG13ED	28					2000		

Applications

- Retrofit in the existing points • Industry & factory • Retail & commercial
- Office & bank • Low height warehouse



A LIGHT FOR EVERY MOOD.

The state-of-the-art mood lighting panels from ELKOHA are perfect for your living and dining room, office and lounge. Choose from different light colours – a traditional warm yellow for when you're relaxing, a cool white light for your professional hours and a daylight shade, most recommended for reading. These remote-operated mood lights even let you adjust the brightness in your room – reason why you can count on them to compliment any occasion.

Know more on page no. 31 and 32.



3000K



4500K



6000K



Remote operated mood lighting panels to compliment your state of mind.

PANEL LIGHT



SUPERIOR SERIES

CCT DIMMABLE PANEL LIGHT

Product Features

- Glare free, High uniformity
- CCT can be changed from 3000K to 6000K
- Brightness can be changed from 5% to 100%
- 2.4 GHz RF communication mode remote control
- Use of optical PMMA light guide
- Use of indirect lighting makes it visually comfortable
- Application in the design of concise interior space
- AL6063-T5 aluminium frame for better heat dissipation
- Ingress Protection: IP20

Applications:

- Office, supermarket, mall
- High-end shops & residential spaces
- Board room, hospital & hotel

Product Name	Article No.	Wattage (W)	Operating Voltage Range(V)	Power Factor	CRI	CCT(K)	Lumen (lm)	IP	Life(Hrs)
CCT Dimmable LED Panel Light 22 1X1	CDPL-22/0303WW-CW	22	100-240	>0.9	>80	3000 to 6000	1870	IP20	50,000
CCT Dimmable LED Panel Light 22 2X1	CDPL-22/0603WW-CW								
CCT Dimmable LED Panel Light 40 2X2	CDPL-40/0606WW-CW	40							
CCT Dimmable LED Panel Light 40 4X1	CDPL-40/1203WW-CW								
CCT Dimmable LED Panel Light 40 4X2	CDPL-40/1206WW-CW								



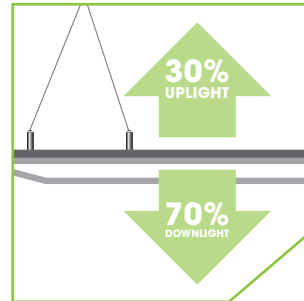


SUPERIOR SERIES

DOUBLE SIDE PANEL LIGHT

Product Features

- Double-sided LED panel light with perfect optical design effect
- Use of optical PMMA light guide
- Use of indirect lighting makes it visually comfortable
- Illuminance uniformity & minimum glare
- AL6063-T5 aluminium frame for better heat dissipation
- Application in the design of concise interior space
- Ingress Protection: IP20



Applications:

- Office, Supermarket, Mall
- High-end shops & residential spaces
- Board Room, Hospital & Hotel

Product Name	Article No.	Wattage(W)	Operating Voltage Range(V)	Power Factor	CRI	CCT(K)	Lumen (lm)	IP	Life(Hrs)					
Double Side LED Panel Light 22 WW (2X0.6)	DSPL-22/0602WW	22	100-240	>0.9	>80	3000	1870	IP20	50,000					
Double Side LED Panel Light 22 DW (2X0.6)	DSPL-22/0602DW					5000								
Double Side LED Panel Light 22 CW (2X0.6)	DSPL-22/0602CW					6000								
Double Side LED Panel Light 22 WW (2X1)	DSPL-22/0603WW					3000								
Double Side LED Panel Light 22 DW (2X1)	DSPL-22/0603DW					5000								
Double Side LED Panel Light 22 CW (2X1)	DSPL-22/0603CW					6000								
Double Side LED Panel Light 40 WW (4X1)	DSPL-40/1203WW	40									3000	3400		
Double Side LED Panel Light 40 DW (4X1)	DSPL-40/1203DW					5000								
Double Side LED Panel Light 40 CW (4X1)	DSPL-40/1203CW					6000								
Double Side LED Panel Light 54 WW (4X1)	DSPL-54/1203WW	54									3000	4590		
Double Side LED Panel Light 54 DW (4X1)	DSPL-54/1203DW					5000								
Double Side LED Panel Light 54 CW (4X1)	DSPL-54/1203CW					6000								



PANEL LIGHT



STANDARD SERIES

Product Features

- Slim, compact & fashionable design
- Highly reliable
- Glare free, High uniformity
- Long life: 30,000 hrs
- Ingress Protection: IP20
- Option: dimmable & non dimmable

Applications:

- Replacement of 2X2 conventional panel lights (CFL/FTL)
- Residential & office lighting

Product Name	Article No.	Wattage(W)	Operating Voltage Range(V)	Power Factor	CRI	CCT(K)	Lumen(lm)	IP	Life(Hrs)
1X1 16W CW Panel Light	SLPL16/0101CW	16	100-240	>0.8	>70	5700	1070	IP20	30,000
1X1 16W WW Panel Light	SLPL16/0101WW				>80	3000	770		
2X2 35W CW Panel Light	SLPL35/0202CW	35		>0.9		5700	3000		
2X2 50W CW Panel Light	SLPL50/0202CW	50		>0.95	>70	3400			
2X2 50W WW Panel Light	SLPL50/0202WW				>80	3000	2400		
1X4 58W CW Panel Light	SLPL58/0104CW	58			>70	5700	3700		
1X4 58W WW Panel Light	SLPL58/0104WW				>80	3000	3200		



DOWN LIGHT



CLASSIC SERIES

Product Features

- Slim, compact & fashionable design
- Highly reliable
- Glare free, High uniformity
- Ingress Protection: IP20

Applications

- Replacement of round CFL based downlights
- Residential & office lighting

Product Name	Article No.	Wattage(W)	Operating Voltage Range(V)	Power Factor	CRI	CCT(K)	Lumen(lm)	IP	Life(Hrs)
4" 8W CW Downlight	SLDL 08/04 CW	8	100-240	>0.4	>70	5700	400	IP20	25,000
4" 8W WW Downlight	SLDL 08/04 WW				>80	3000	300		
6" 12W CW Downlight	SLDL 12/06 CW	12		>0.8	>70	5700	730		
6" 12W WW Downlight	SLDL 12/06 WW				>80	3000	560		



CLASSIC SERIES

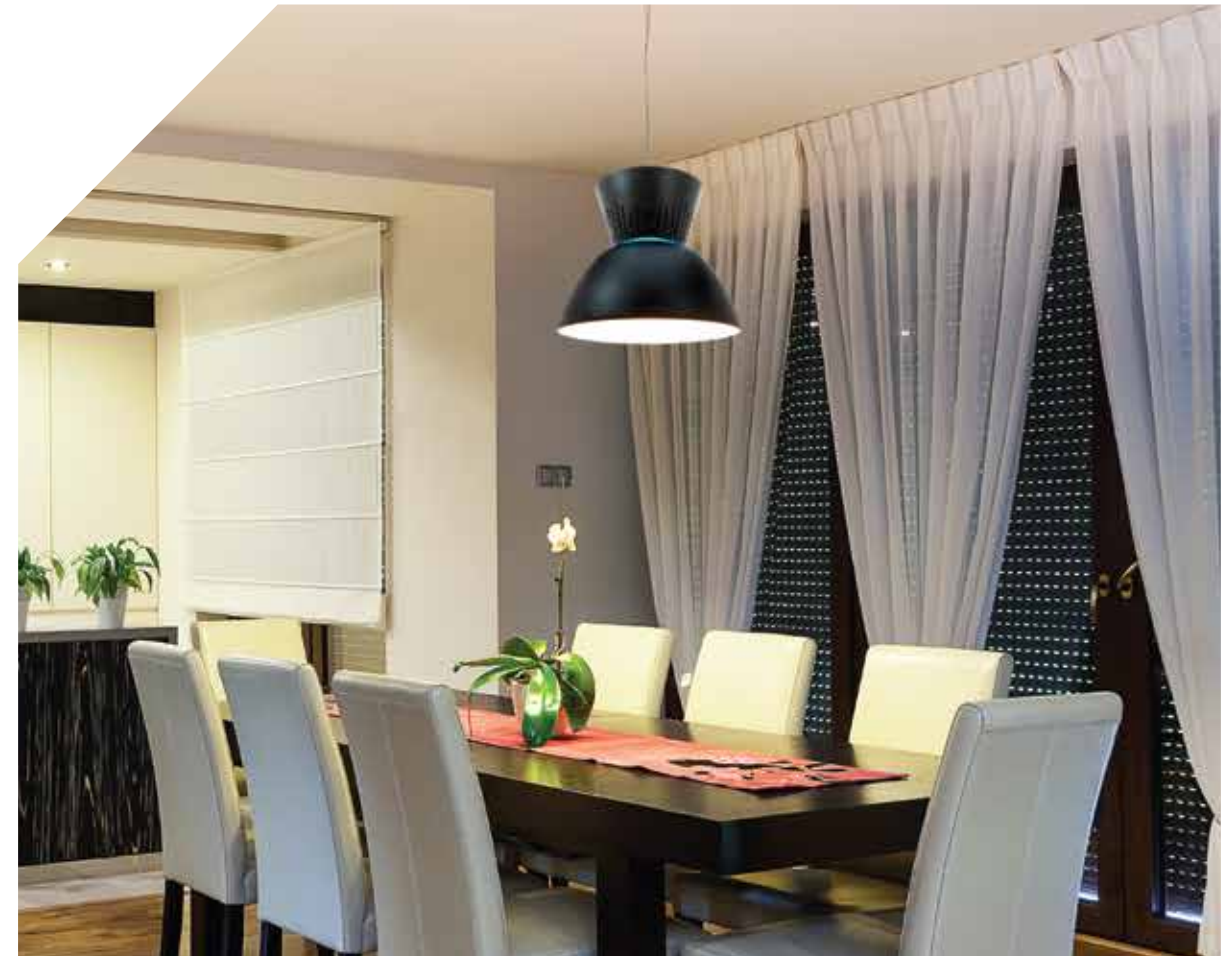
Product Features

- Elegant design for home décor
- Glare free, High uniformity
- Frosted lighting cover provides smoother illumination
- Waterproof
- Ingress Protection: IP65
- Option: diffused/clear
- Option: dimming option available

Applications

- Household & commercial lighting

Product Name	Article No.	Wattage (W)	Operating Voltage Range(V)	Power Factor	CRI	CCT(K)	Lumen (lm)	IP	Life(Hrs)
Home Décor LED Light 30W CW with frosted cover	HDL-30W CW	30	100-240	>0.9	>80	5000	2550	IP65	30,000
Home Décor LED Light 30W CW with clear cover							3200		
Home Décor LED Light 30W WW with frosted cover	HDL-30W WW					3000	2400		
Home Décor LED Light 30W WW with clear cover							3050		
Home Décor LED Light 50W CW with frosted cover	HDL-50W CW	50				5000	3350		
Home Décor LED Light 50W CW with clear cover							4020		
Home Décor LED Light 50W WW with frosted cover	HDL-50W WW					3000	3150		
Home Décor LED Light 50W WW with clear cover							3780		



Ampere (A): The basic unit of electric current adopted under the System International Units.

Alternating Current (AC): Electrical current in which the flow of electric charge reverses direction periodically.

Ambient Lighting: Lighting that is designed to provide uniform light distribution throughout an area.

AH: Ampere Hour. Current flowing in ampere per unit hour.

Beam Angle: Size of the cone of light produced by a source measured in degrees. It is defined as the angle where intensity of the light becomes half of the maximum intensity.

Brightness: Often used incorrectly with respect to illumination as a synonym for luminous flux, an objective measurement of the visible power of a light source. The term is correctly used when describing screen brightness in a display or television.

CCT (Correlated Color temperature): Color temperature is the actual temperature of the black body at which it matches the color of non black body. Usually specified in Kelvin (K). The lower the Kelvin temperature, the warmer the light feels, or appears. CW: 5000-7000K; NW: 4000-5000K; WW: 2700-3500K.

CRCA: Cold rolled cold annealed

CRI: The color rendering index is a quantitative measure of the ability of a light source to reproduce the colors of various objects faithfully in comparison with an ideal or natural light source. CRI range (0-100), natural outdoor light has a CRI of 100.

Diffuser: Optical element used to mix light ray to improve uniformity of light and avoid hot spots.

Direct Current (DC): Electrical current in which the flow of electric charge moves in one direction only.

Driver: Driver in the LED product is an electronic device that converts the input AC voltage to DC voltage. They can either be a constant current type or constant voltage type or both.

Efficacy: The optical output of a light source divided by the total electrical power input to that source, expressed in lumens per watt (lm/W).

Goniophotometer: A photometric equipment used to measure the luminous flux & luminous intensity distribution of the luminaires.

Glare: Glare is caused by brightness of any objects within the visual field which is brighter than the adaptation level of eye.

Heat Dissipation: This is the transition of thermal energy from a hotter object to a cooler object. In case of LED products heat sinks made from high quality aluminum and other alloys to accomplish this.

Heat Sink: A part of the thermal system that conducts heat away from sensitive components, such as LEDs and other driver components.

Illuminance: Illuminance is the amount of luminous flux falling on a unit surface area. If the area is measured in square feet the unit of illuminance is footcandles (fc). If measured in square meters, the unit of illuminance is lux (lx).

Infrared radiation: Electromagnetic radiation with wavelength range from 750 nm -10,000 nm.

IP: Ingress Protection. Degree of protection against dust and water.

Junction Temperature (maximum): Junction temperature, denoted as Tjmax is the highest operating temperature of the actual semiconductor in an electronic device.

Kelvin (K): Unit of temperature starting from absolute zero.

Kilowatt (KW): Measure of electrical power equal to 1000 Watt.

LED: Light Emitting Diode is a solid state semiconductor device that converts electrical energy directly into light.

LM-79: IESNA approved method for the electrical and photometric test of solid state lighting devices. Specifies procedures for measuring total luminous flux, light distribution, electrical power, luminous efficacy etc.

LM-80: IESNA approved method of measuring lumen depreciation of LED light sources. It is related to the effective and useful life of the product.

Lumen Maintenance: Describes how long a light source will retain a certain percentage of its initial lumen output.

Lumen Depreciation: Describes the percentage of light lost relative to the initial lumen output.

Luminaires: Lighting fixture complete with lamp, housing, power supply and optical components used to direct light.

Light Intensity: It is the amount of luminous flux in a given direction (solid angle). Its unit is Candela (cd).

Luminance: A photometric measure of the luminous intensity per unit area of light travelling in a given direction. It describes the amount of light that passes through, is emitted or reflected from a particular area, and falls within a given solid angle. Its unit is cd/m².

Lux: Unit of illuminance. One lux is equal to one lumen per one square meter.

Light Output Ratio: It is the ratio of total luminous flux emitted by luminaire to total luminous flux of bare lamp. It is indicated in percentage.

MS: Mild Steel, a material that is used in housing of luminaires.

Maintenance factor: It is a planning factor used in application design for depreciation in terms of
 1) Lumen output of lamp
 2) Deterioration of reflecting surfaces
 3) Deterioration of reflecting properties of surrounding surfaces
 4) Lamp burn out

PMMA: Polymethyl methacrylic. Material used in diffuser or lenses.

Power Factor: The real power divided by the apparent power (i.e., product of the rms input voltage and rms input current of a driver).

Power Supply: Device that supplies electrical energy. Most LED power supplies convert AC to DC.

RGB: Acronym for Red, Green and Blue. These are the 3 primary colors of light. Combinations of these 3 colors create wide variety of other colors.

Spotlight: A lamp that produces a narrow beam angle designed to illuminate a specific targeted area.

Thermal Management: Controlling the operating temperature of the product through design. Examples include heat sinks and air flow.

Ultraviolet (UV): Invisible radiation that is shorter in wavelength and higher in frequency than visible violet light. UV radiation can cause oxidation, fading of colors of furniture, carpet, draperies and art work.

Uniformity: It is the ratio of minimum to average illuminance.

Watt: The unit of electrical power as used by an electrical device during its operation. Many lamps come with rating in watt to indicate their power consumption

DISCLAIMER: Images may not depict actual product. Product appearance, specifications, and other characteristics are subject to change without notice.

ELKOHHA

see the light



ELCOMPONICS TECHNOLOGIES INDIA PVT. LTD.

Corporate office: C - 24, Phase - 2, Noida - 201305

Manufacturing: A - 120, Sector - 63, Noida - 201301

Toll Free: 1-800-103-5891 Email: contact@elkoha.com

Website: www.elkoha.com

